

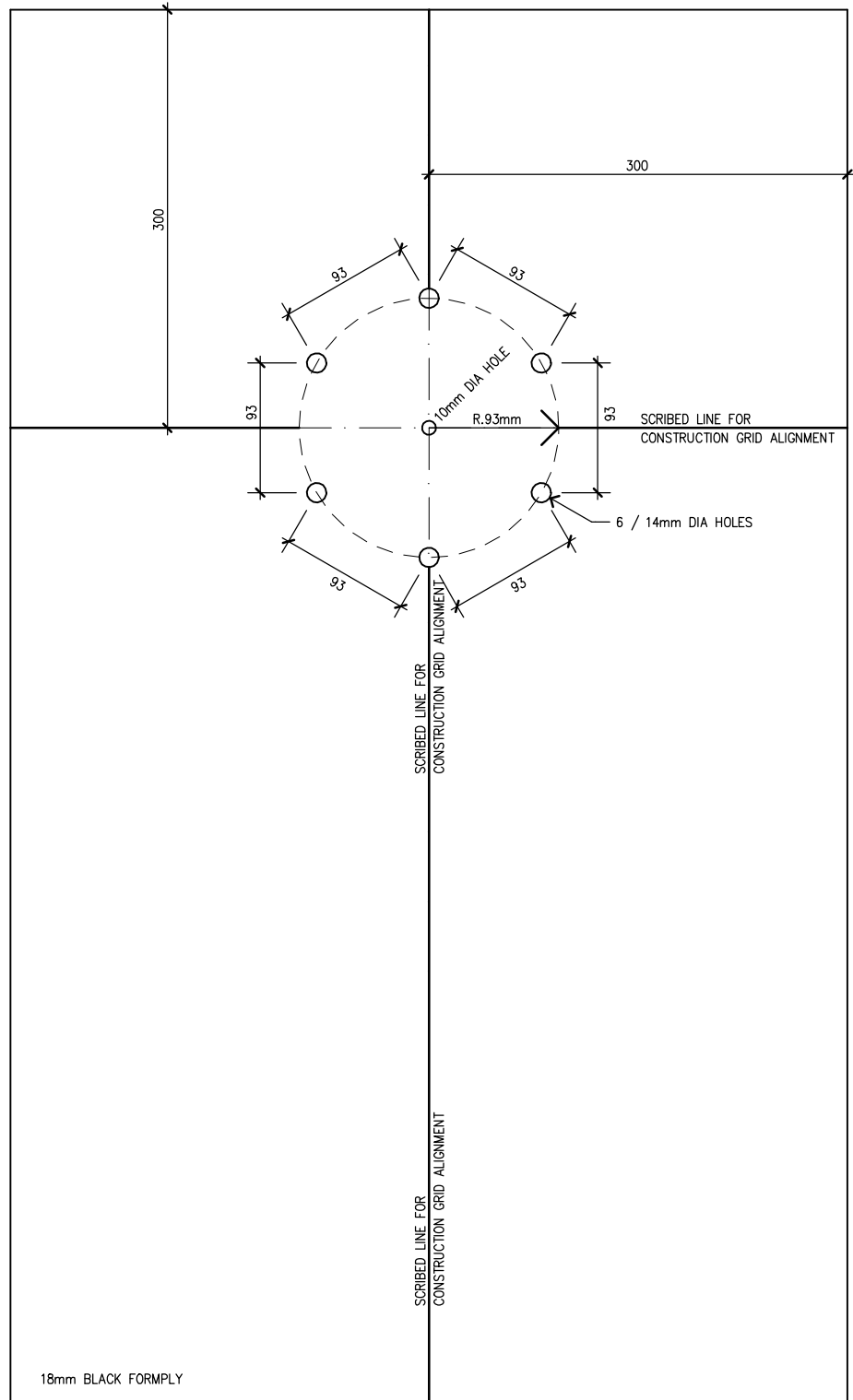
Prefabricated Kitset Modules to be supplied by the Employer

Notes:

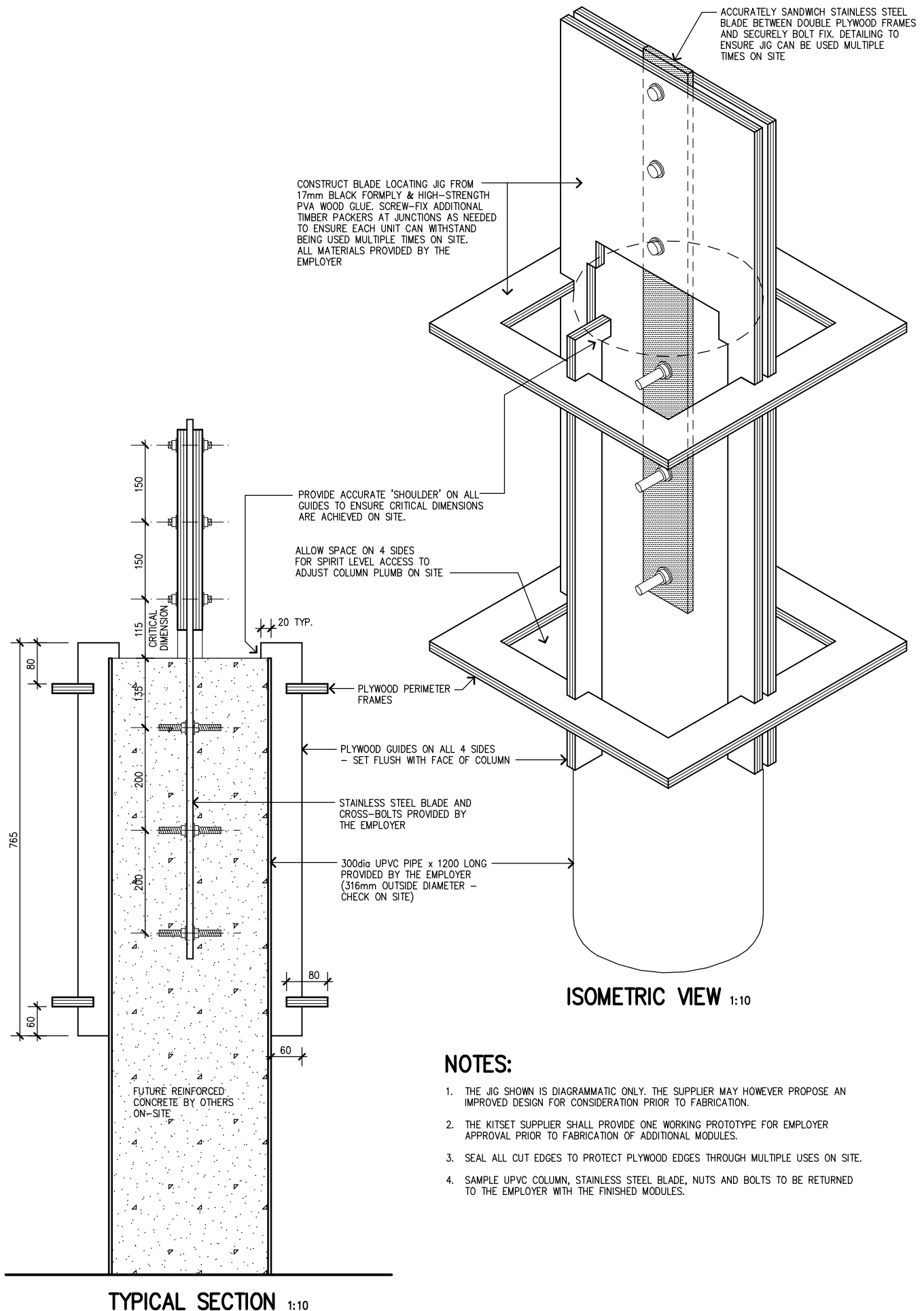
1. The following 'kitset' modules are generally listed in the order they will be used in the Works.
2. Some larger modules may be delivered to site in several pieces due to transport concerns. The Contractor shall advise the Superintendent if those items shall be handed over by the Kitset Supplier dis-assembled (for efficient on-site storage) or fully assembled.

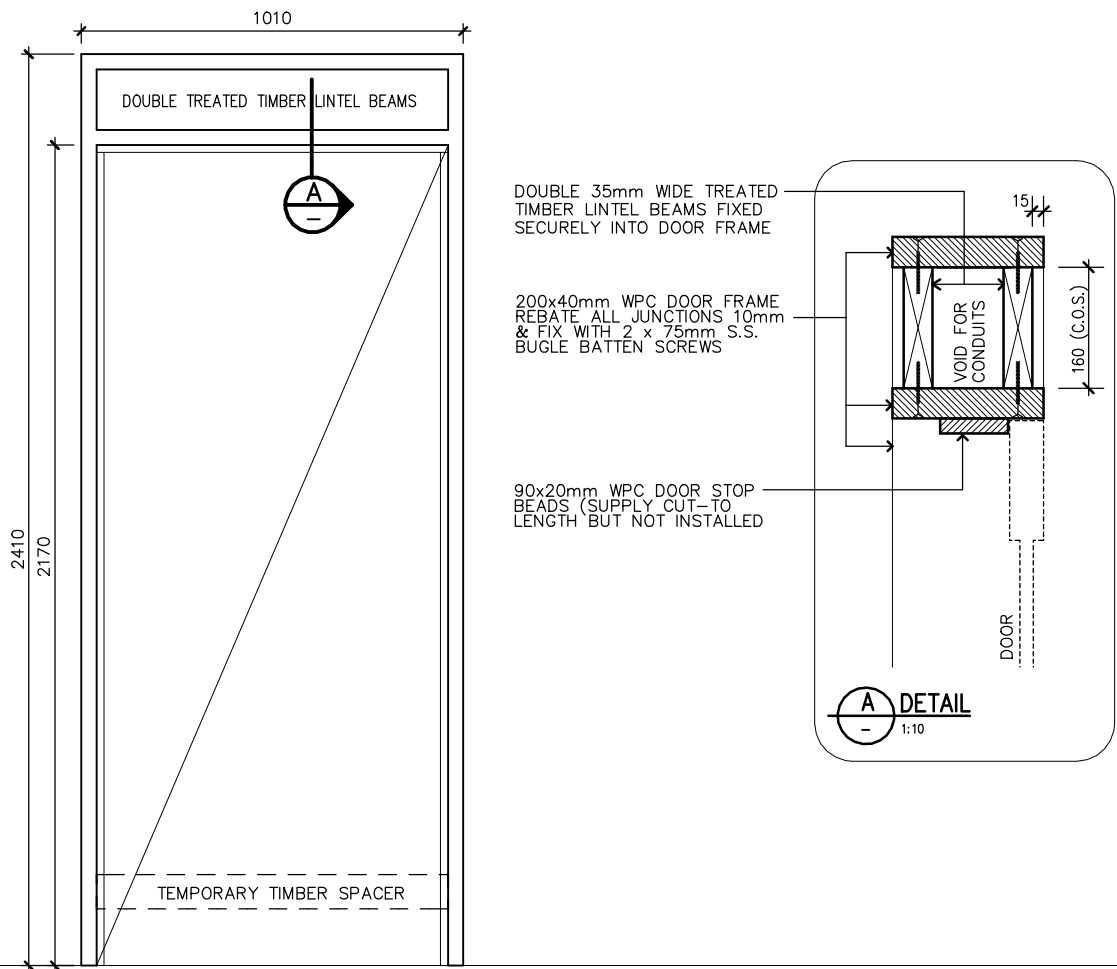
Code	Description	Details / Finish	No. off
DHT	Stub Column – Drill Hole Template	Black formwork ply with clear sealed edges Module to be used multiple times in the works Contractor to clean down after each use	3
BLJ	Stub Column – Blade Locating Jig	Black formwork ply with clear sealed edges Module to be used multiple times in the works Contractor to clean down after each use	6
D1	Single solid door in structural wood-plastic-composite frame	Door and frame supplied separately (not hinged) Stop-beads supplied un-installed Items supplied painted with primer and undercoat Hinges and hardware supplied by others	9
D2	Single ventilated screen door in structural wood-plastic-composite frame	Door and frame supplied separately (not hinged) Stop-beads supplied un-installed Items supplied painted with primer and undercoat Hinges and hardware supplied by others	3
D3	Double solid doors in structural wood-plastic-composite frame	Doors and frame supplied separately (not hinged) Stop-beads supplied un-installed Items supplied painted with primer and undercoat Hinges and hardware supplied by others	5
W1	Security mesh in structural timber window frame	Window supplied fully fabricated Item supplied painted with primer and undercoat Suggest temporarily remove cover battens and mesh before building frame into wall	3
W2	Operable louvre window in structural timber window frame	Window supplied fully fabricated Frame supplied painted with primer and undercoat	4
W3	Operable louvre window in structural timber window frame	Window supplied fully fabricated Frame supplied painted with primer and undercoat	4
W4	Operable louvre window and security bars in structural timber window frame	Window supplied fully fabricated Frame supplied painted with primer and undercoat	4
W5	Operable louvre window in structural timber window frame	Window supplied fully fabricated Frame supplied painted with primer and undercoat	6
W6	Operable louvre window in structural timber window frame	Window supplied fully fabricated Frame supplied painted with primer and undercoat	14
W7	Operable louvre window in structural timber window frame	Window supplied fully fabricated Frame supplied painted with primer and undercoat	2
W8	Operable louvre window and security bars in structural timber window frame	Window supplied fully fabricated Frame supplied painted with primer and undercoat	2
W9	Double solid window shutters in structural timber window frame	Shutters and frame supplied separately (not hinged) Stop-beads supplied un-installed Items supplied painted with primer and undercoat Hinges and hardware supplied by others	2
B1	Roof support 'bracket'	Item supplied fully fabricated	

		Item supplied painted with primer and undercoat Fixings for installation supplied by others Note: One side of roof beam channel removable to allow installation of roof beams (RB) on site.	20
T1	Roof support 'tree' (short)	Items supplied fully fabricated Tree 'trunks' supplied longer than required Items supplied painted with primer and undercoat Fixings for installation supplied by others Notes: a. One side of roof beam channel removable to allow installation of roof beams (RB) on site. b. Contractor to trim base of 'trunks' to exact length and drill fixing holes on site.	13
T2	Roof support 'tree' (tall)		13
T3	Roof support 'tree' (double-trunk, short)		1
T4	Roof support 'tree' (double-trunk, short)		1
EWBP	End wall bracing panel	Module supplied fully fabricated and square Module supplied painted with primer and undercoat Fixings for installation supplied by others	5
BB1	Bracing Beam (1629mm long)	Modules supplied with cladding one (1) side only Modules supplied painted with primer & undercoat Fixings for installation supplied by Employer Cladding for other side supplied by Employer Modules supplied slightly shorter than needed (Contractor to neatly install end-packers on site)	1
BB2	Bracing Beam (2229mm long)		1
BB3	Bracing Beam (2278mm long)		1
BB4	Bracing Beam (4629mm long)		3
BB5	Bracing Beam (4678mm long)		9
CBT	Column bracing tie	Module supplied prefabricated Module supplied painted with primer & undercoat Fixings for installation supplied by Employer Modules supplied slightly shorter than needed (Contractor to neatly install end-packers on site)	16
RB1	Roof beam – 2.7m long	Module supplied prefabricated Module supplied longer than required Module supplied painted with primer and undercoat Fixings for installation supplied by others Note: Contractor to cut beams to exact length required length on site.	18
RB2	Roof beam – 5.1m long		46
FLM	Fixed louvre mullion	Module supplied cut to profile as shown Module supplied painted with primer & undercoat Fixings for installation supplied by Employer Note: Mullions supplied longer than needed (Contractor to cut to length on site as required)	25
UA1	Universal Access Template 1 (accessible vendor space)	Module supplied cut to profile as shown Module supplied painted with primer & undercoat Module to be used multiple times in the works Contractor to clean down after each use	2
UA2	Universal Access Template 2 (accessible parking space)		2

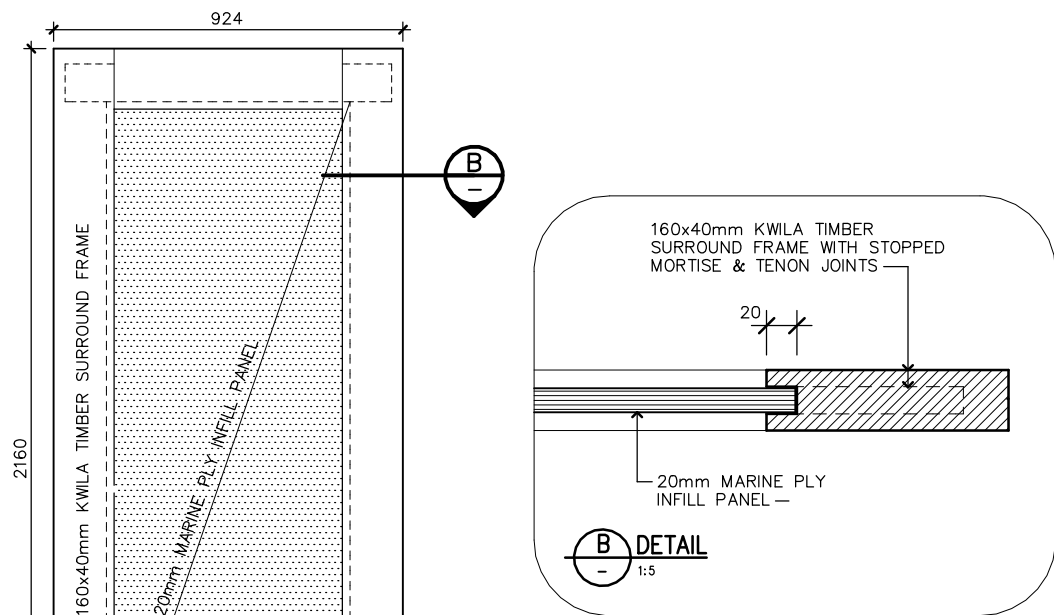


Drill Hole Template DHT
COLUMN REINFORCING BAR SETOUT 1:5





D1 STRUCTURAL DOOR FRAME – SINGLE



D1a SINGLE DOOR LEAF

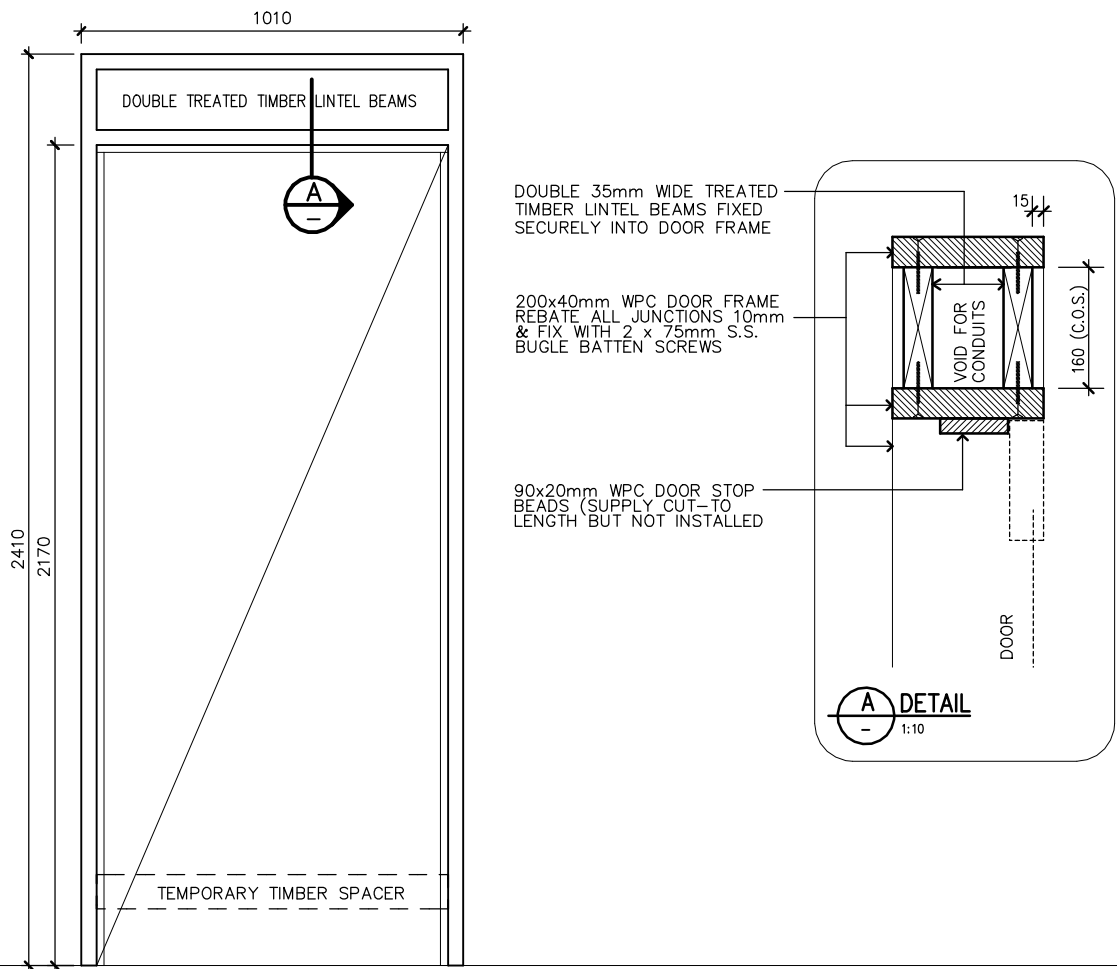
FINISHING SCHEDULE:

By Supplier in Factory (to all exposed surfaces):

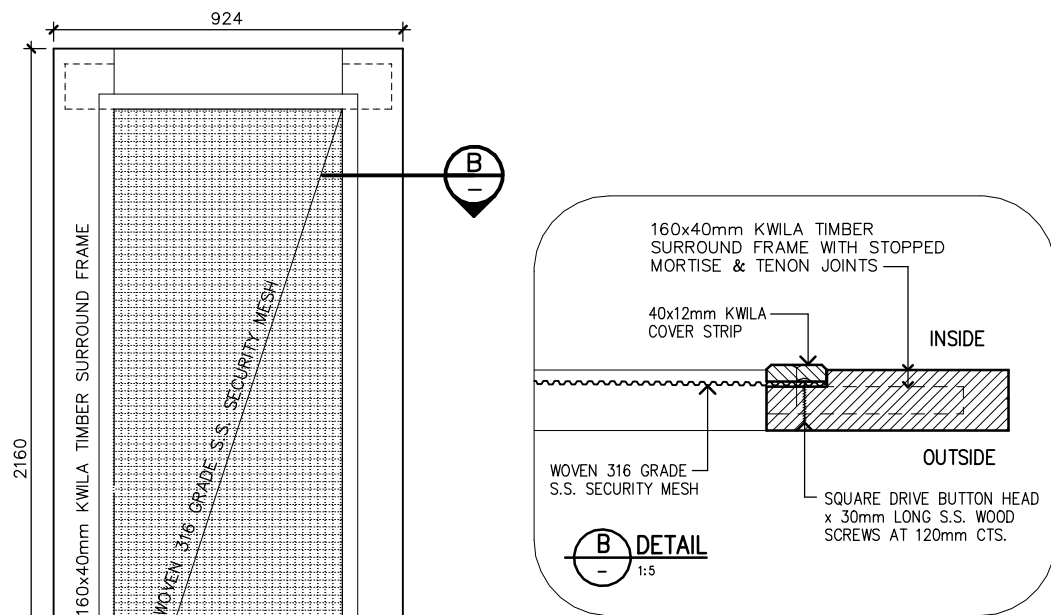
- ONE COAT OIL-BASED WOOD PRIMER
- ONE COAT OIL-BASED UNDERCOAT (WHITE)

By Construction Contractor on site (to all exposed surfaces):

- TWO COATS OIL-BASED FINISH COAT (SELECTED COLOUR)



D2 STRUCTURAL DOOR FRAME – SINGLE



D2a SINGLE DOOR LEAF

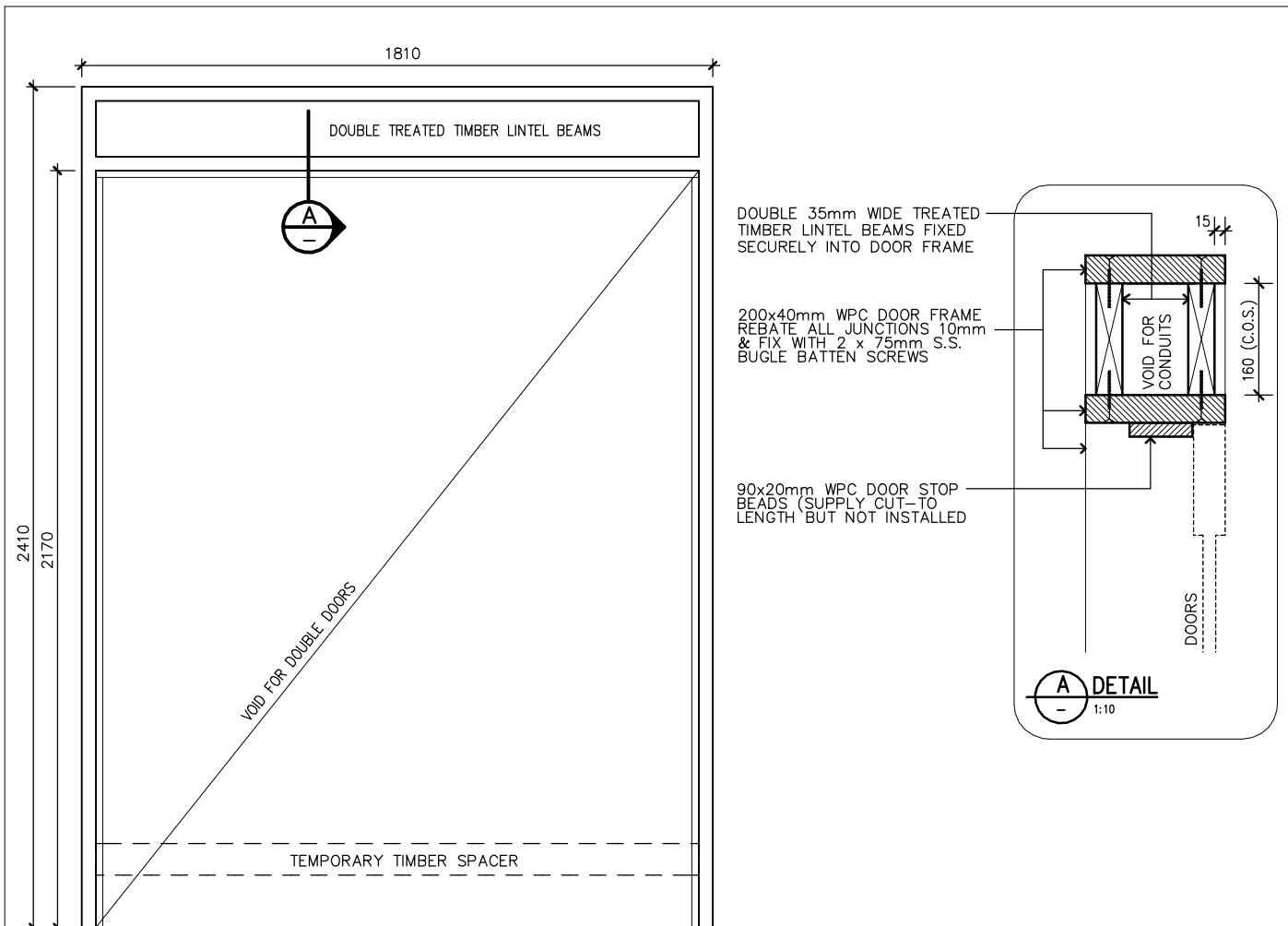
FINISHING SCHEDULE:

By Supplier in Factory (to all exposed surfaces):

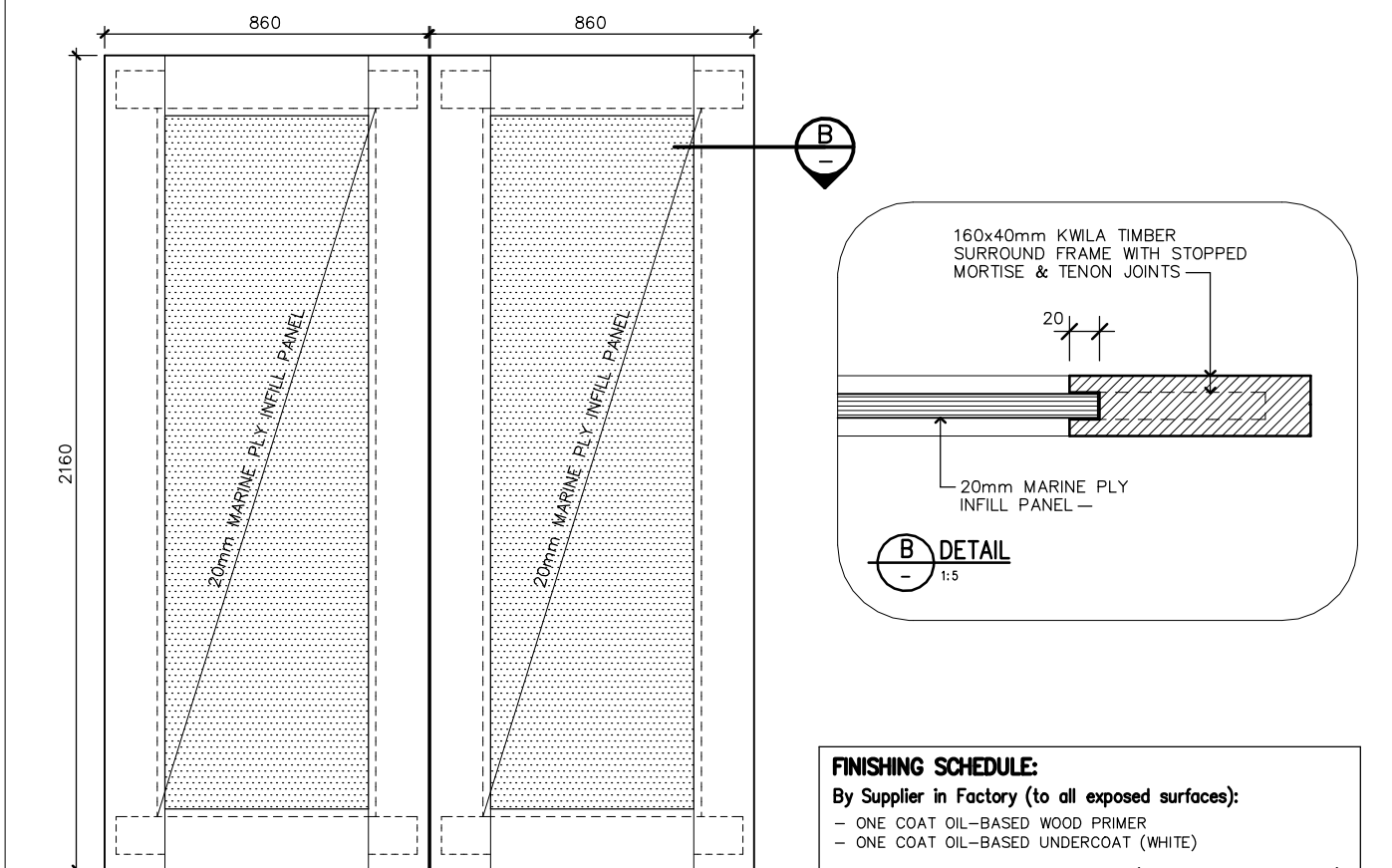
- ONE COAT OIL-BASED WOOD PRIMER
- ONE COAT OIL-BASED UNDERCOAT (WHITE)

By Construction Contractor on site (to all exposed surfaces):

- TWO COATS OIL-BASED FINISH COAT (SELECTED COLOUR)



D2 STRUCTURAL DOOR FRAME – DOUBLE



D2a DOUBLE DOOR LEAVES

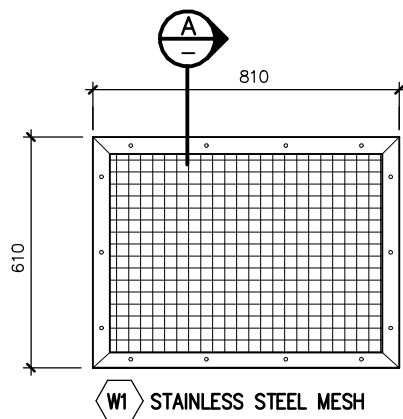
FINISHING SCHEDULE:

By Supplier in Factory (to all exposed surfaces):

- ONE COAT OIL-BASED WOOD PRIMER
- ONE COAT OIL-BASED UNDERCOAT (WHITE)

By Construction Contractor on site (to all exposed surfaces):

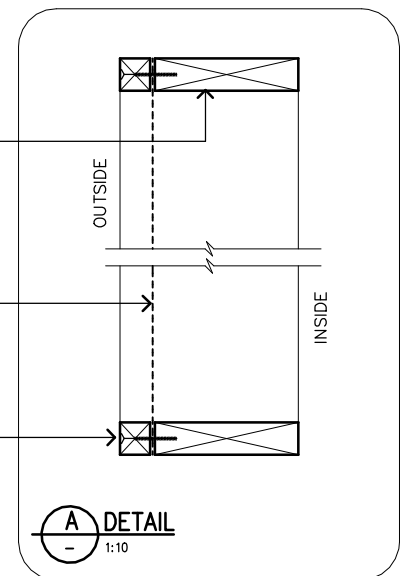
- TWO COATS OIL-BASED FINISH COAT (SELECTED COLOUR)



190x45mm TREATED PINE
STRUCTURAL TIMBER WINDOW FRAME.
REBATE ALL JUNCTIONS 10mm AND
FIX WITH 2/75mm S.S. BUGLE
BATTEN SCREWS

25x25x2.5mm 316 GRADE
S.S. MESH FIXED TO WINDOW
FRAME WITH COVER BATTENS

40x40mm TIMBER COVER
BATTENS FIXED WITH 75mm
S.S. BUGLE BATTEN SCREWS
@ 200mm CTS MAX.



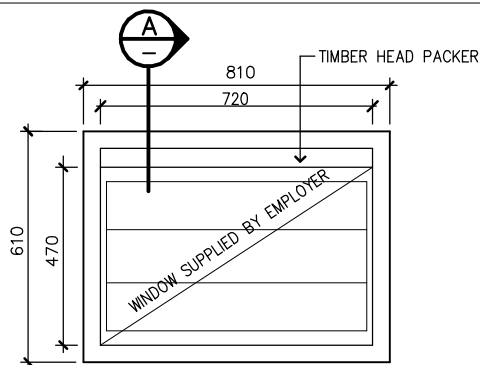
FINISHING SCHEDULE:

By Supplier in Factory (to all exposed surfaces):

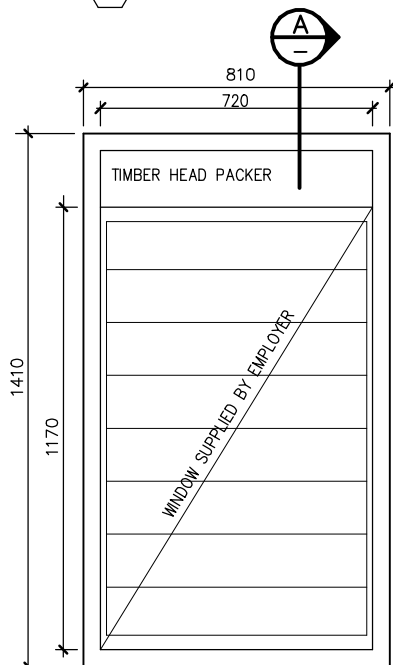
- ONE COAT OIL-BASED WOOD PRIMER
- ONE COAT OIL-BASED UNDERCOAT (WHITE)

By Construction Contractor on site (to all exposed surfaces):

- TWO COATS OIL-BASED FINISH COAT (SELECTED COLOUR)



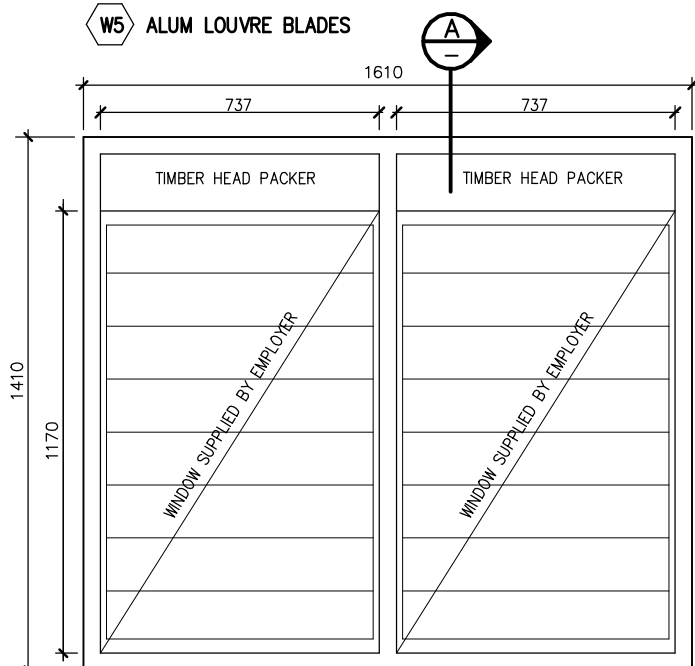
W2 ALUM LOUVRE BLADES



W3 CLEAR GLASS LOUVRE BLADES

W4 CLEAR GLASS LOUVRE BLADES + SECURITY BARS

W5 ALUM LOUVRE BLADES



W6 CLEAR GLASS LOUVRE BLADES

W7 ALUM LOUVRE BLADES

W8 ALUM LOUVRE BLADES + SECURITY BARS

INSTALL NEAT TIMBER PACKER AT HEAD

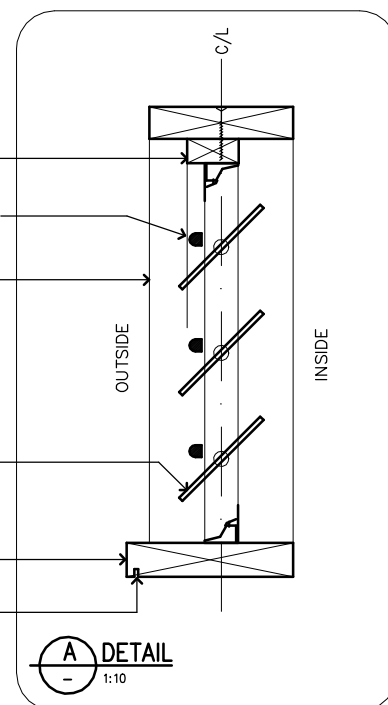
INTEGRAL SECURITY BARS (SOME WINDOWS ONLY)

STRUCTURAL TIMBER WINDOW FRAME
 - JAMBS & HEAD: 190x45 TREATED PINE
 - SILL: 220x45 SMOOTH GAUGED TREATED PINE
 REBATE ALL JUNCTIONS 10mm & FIX WITH 2/75mm S.S. BUGLE BATTEN SCREWS

OPERABLE LOUVRE WINDOW SYSTEM WITH INTEGRAL HEAD & SILL SECTIONS INSTALLED WITHIN STRUCTURAL TIMBER WINDOW FRAME

220x45 SMOOTH GAUGED TREATED TIMBER SILL

SAWN DRIP GROOVE



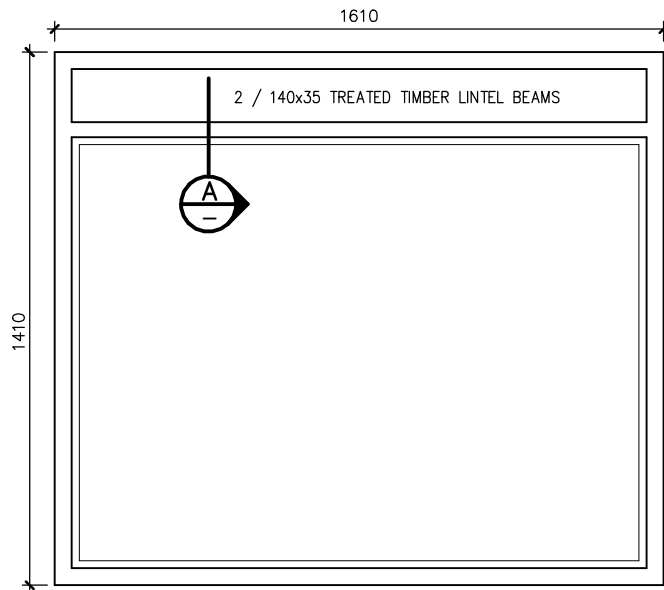
FINISHING SCHEDULE:

By Supplier in Factory (to all exposed surfaces):

- ONE COAT OIL-BASED WOOD PRIMER
- ONE COAT OIL-BASED UNDERCOAT (WHITE)

By Construction Contractor on site (to all exposed surfaces):

- TWO COATS OIL-BASED FINISH COAT (SELECTED COLOUR)

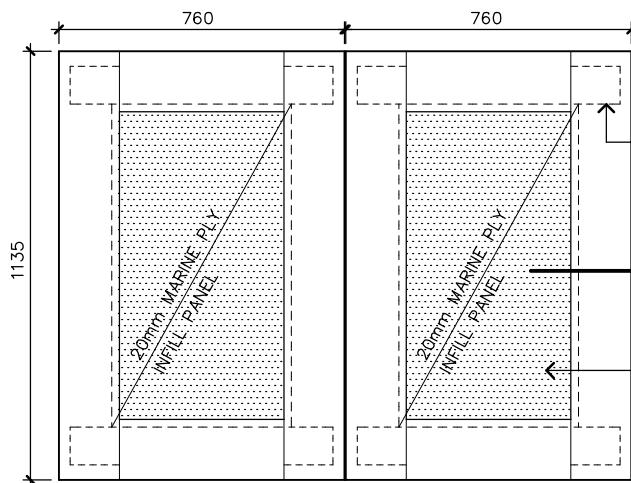
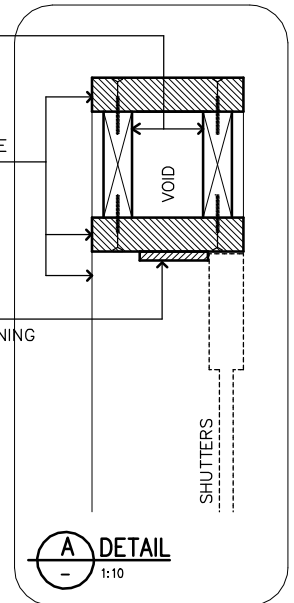


W9 STRUCTURAL WINDOW FRAME

2 / 140x35mm TREATED
TIMBER LINTEL BEAMS FIXED
SECURELY INTO FRAME

190x45mm TREATED PINE FRAME
REBATE ALL JUNCTIONS 10mm
& FIX WITH 2 x 75mm S.S.
BUGLE BATTEN SCREWS

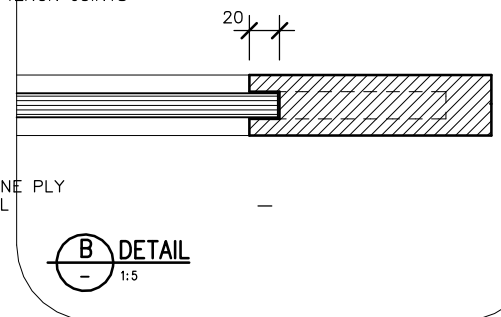
66x12mm TREATED PINE STOP
BEADS TO ALL 4 SIDES OF OPENING



W9a DOUBLE WINDOW SHUTTERS

160x40mm KWILA TIMBER
SURROUND FRAME WITH STOPPED
MORTISE & TENON JOINTS

20mm MARINE PLY
INFILL PANEL



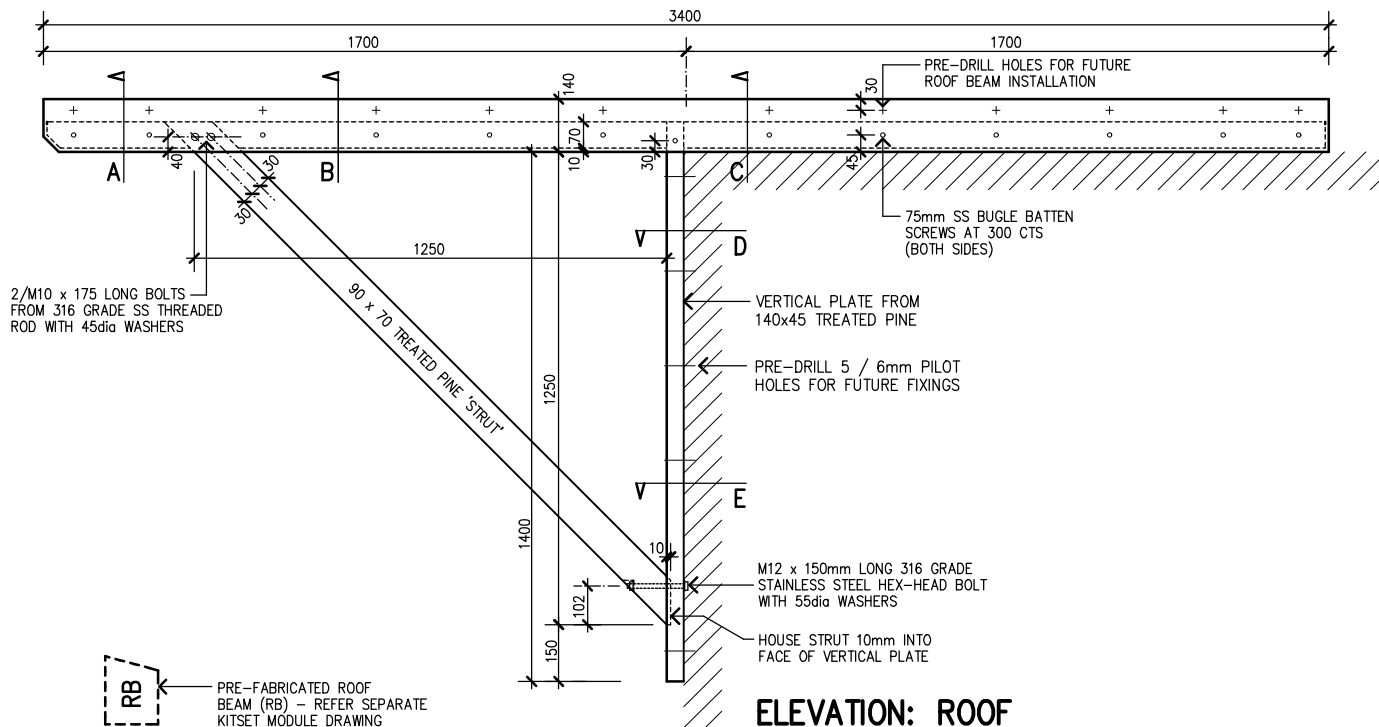
FINISHING SCHEDULE:

By Supplier in Factory (to all exposed surfaces):

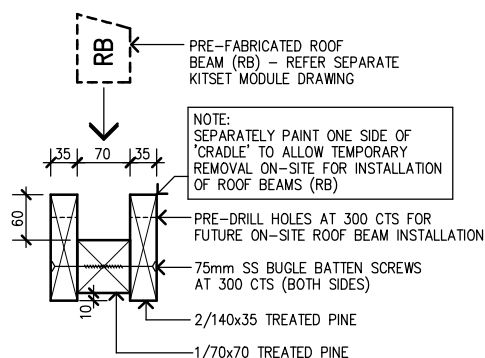
- ONE COAT OIL-BASED WOOD PRIMER
- ONE COAT OIL-BASED UNDERCOAT (WHITE)

By Construction Contractor on site (to all exposed surfaces):

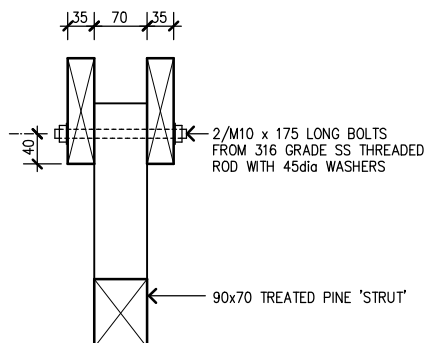
- TWO COATS OIL-BASED FINISH COAT (SELECTED COLOUR)



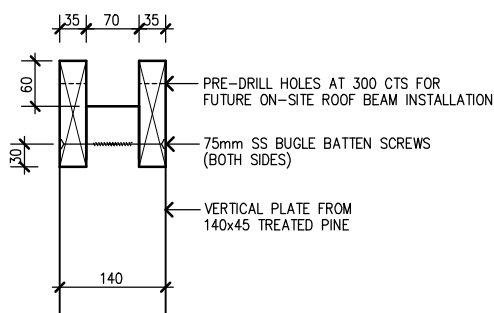
**ELEVATION: ROOF
SUPPORT 'BRACKET'
(TYPE B1)** 1:20



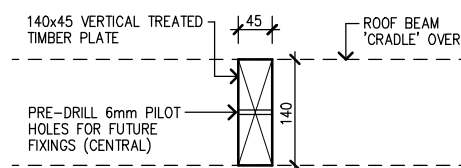
DETAIL A
1:10



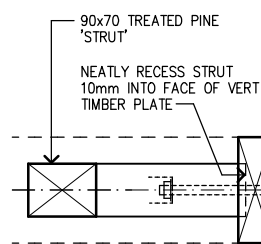
DETAIL B
1:10



DETAIL C
1:10



DETAIL D
1:10



DETAIL E
1:10

FINISHING SCHEDULE:

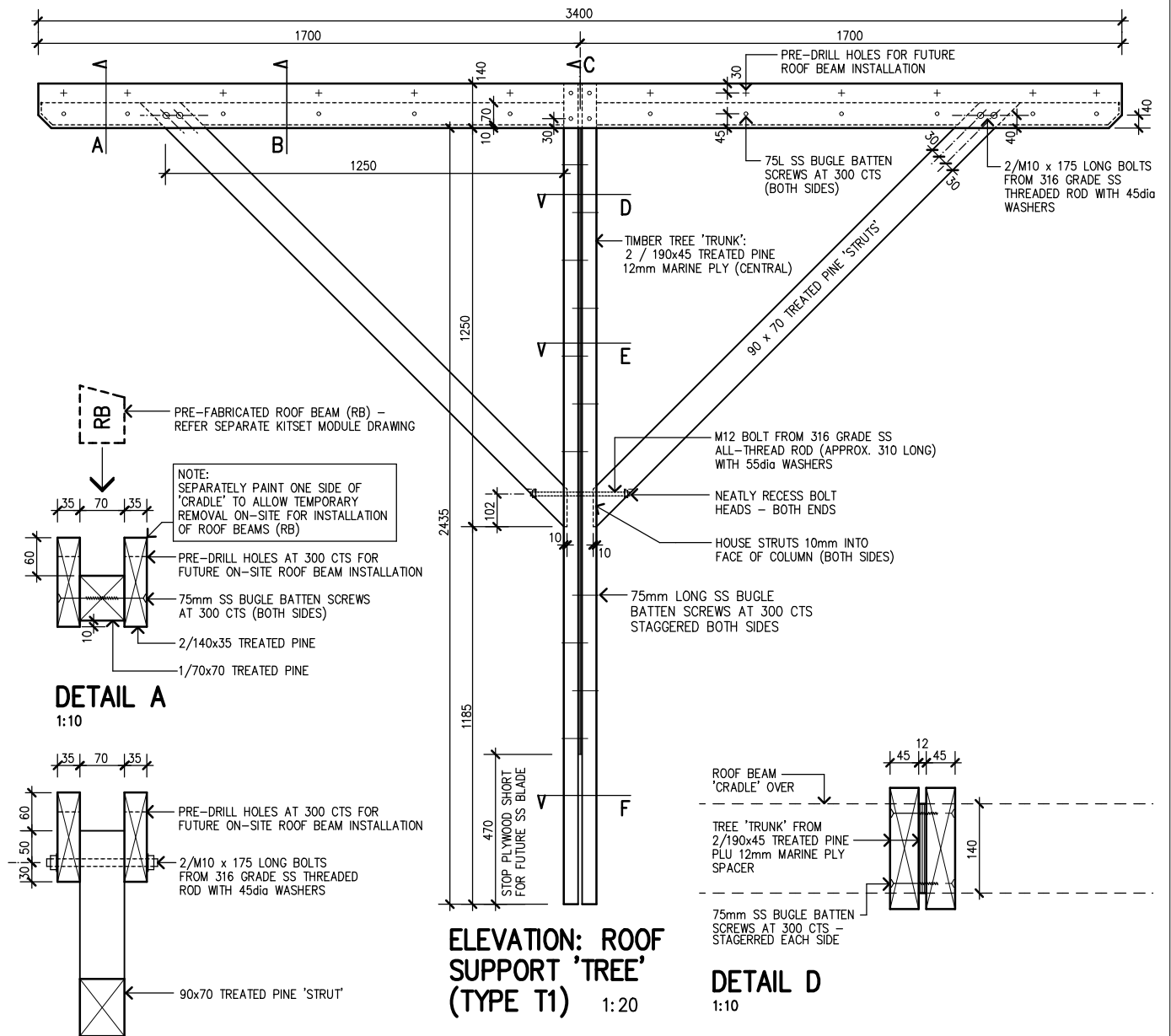
By Supplier in Factory (to all exposed surfaces):

- ONE COAT OIL-BASED WOOD PRIMER
- ONE COAT OIL-BASED UNDERCOAT (WHITE)

Note: Separately paint one side of 'cradle' to allow temporary removal on-site for installation of roof beams.

By Construction Contractor on site (to all exposed surfaces):

- TWO COATS OIL-BASED FINISH COAT (SELECTED COLOUR)



FINISHING SCHEDULE:

By Supplier in Factory (to all exposed surfaces):

- ONE COAT OIL-BASED WOOD PRIMER
- ONE COAT OIL-BASED UNDERCOAT (WHITE)

Note: Separately paint one side of 'cradle' to allow temporary removal on-site for installation of roof beams.

By Construction Contractor on site (to all exposed surfaces):

- TWO COATS OIL-BASED FINISH COAT (SELECTED COLOUR)



ARCHITECT
alexander & lloyd australia pty ltd
architects and project managers
po box 4111, castlecrag NSW 2068 AUSTRALIA
tel +612 9558 7944 e: architects@algroup.net.au
nominated architects
Graham Turner Reg No. 6639 Kathleen Cheong Reg No. 9977

CIVIL & STRUCTURAL ENGINEER
Bruce Delgado
m: +61 428 181 373 e: bruce.delgado@gmail.com

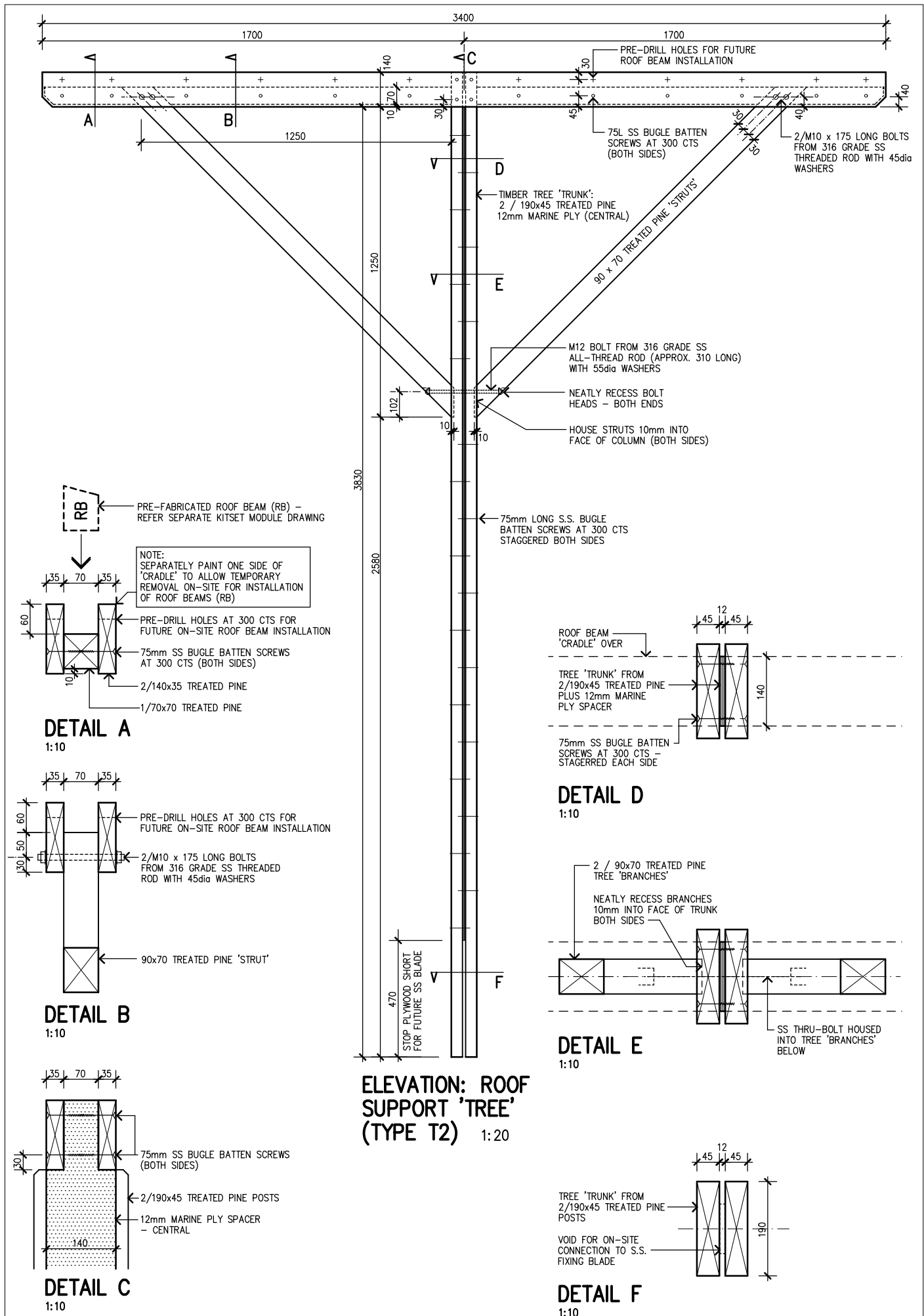
PROJECT:
**OPEN INTEGRATED MARKET
BETIO, SOUTH TARAWA, KIRIBATI**

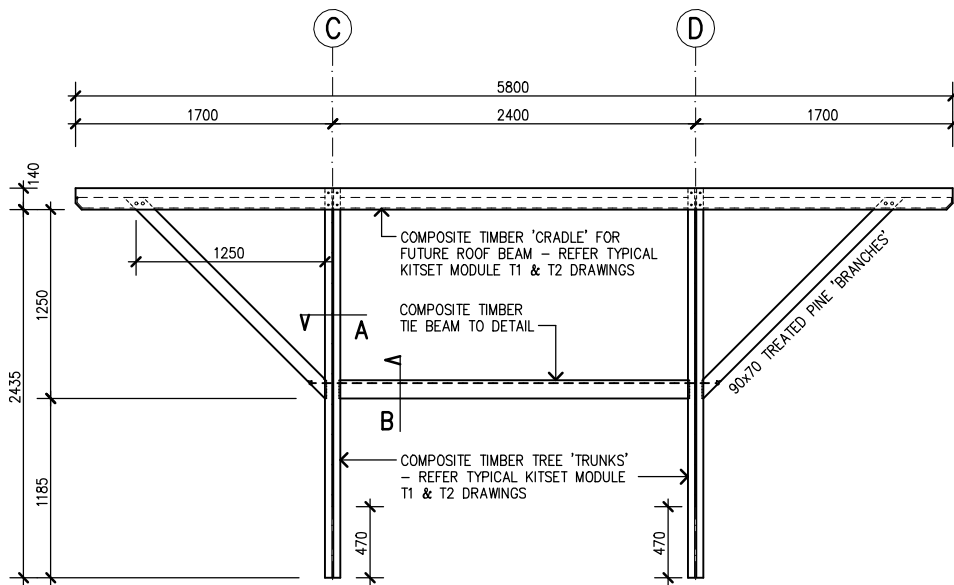
KITSET MODULE NAME:
ROOF SUPPORT 'TREE' - Type 1

DRAWING No.
OIM_K10

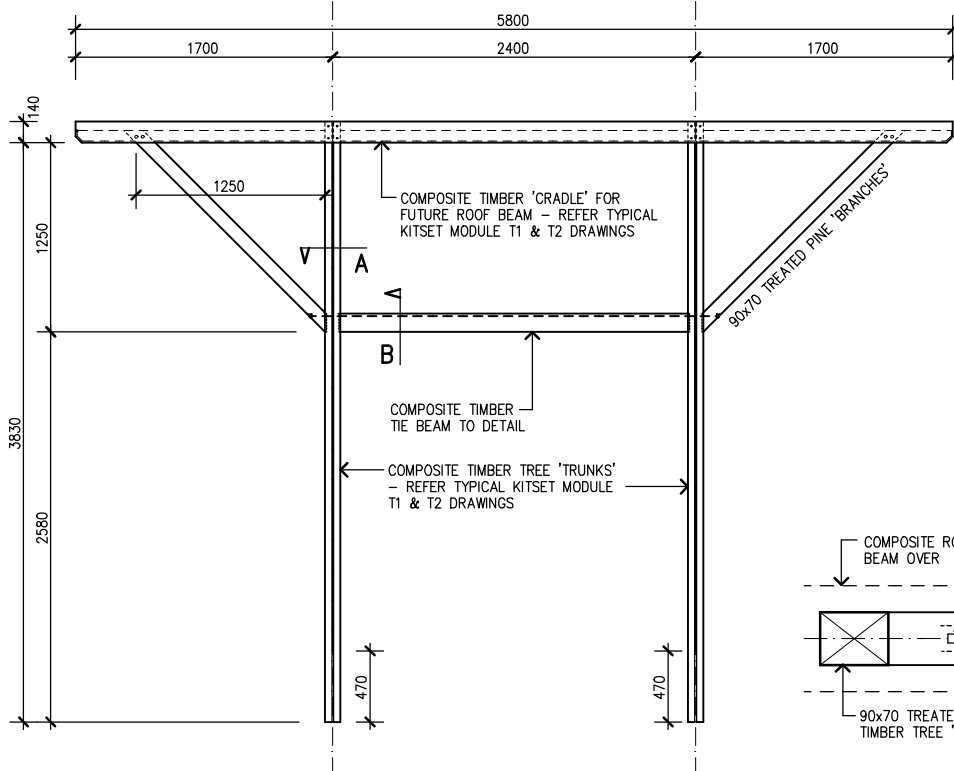
KITSET MODULE CODE:

T1

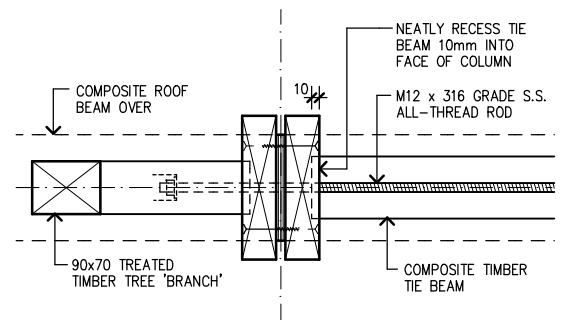




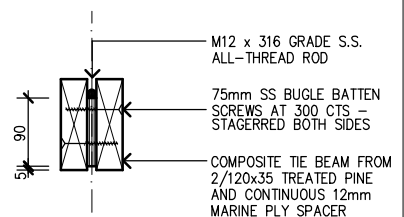
**ELEVATION:
ROOF SUPPORT TREE 'T3'**
1:50



**ELEVATION:
ROOF SUPPORT TREE 'T4'**
1:50



DETAIL A
1:10



DETAIL B
1:10

FINISHING SCHEDULE:

By Supplier in Factory (to all exposed surfaces):

- ONE COAT OIL-BASED WOOD PRIMER
- ONE COAT OIL-BASED UNDERCOAT (WHITE)

Note: Separately paint one side of 'cradle' to allow temporary removal on-site for installation of roof beams.

By Construction Contractor on site (to all exposed surfaces):

- TWO COATS OIL-BASED FINISH COAT (SELECTED COLOUR)



ARCHITECT
alexander & lloyd australia pty ltd
architects and project managers
po box 4111, castlecrag NSW 2068 AUSTRALIA
tel +612 9558 7544 e: architects@algroup.net.au
nominated architects
Graham Turner Reg No. 6639 Kathleen Cheong Reg No. 9977

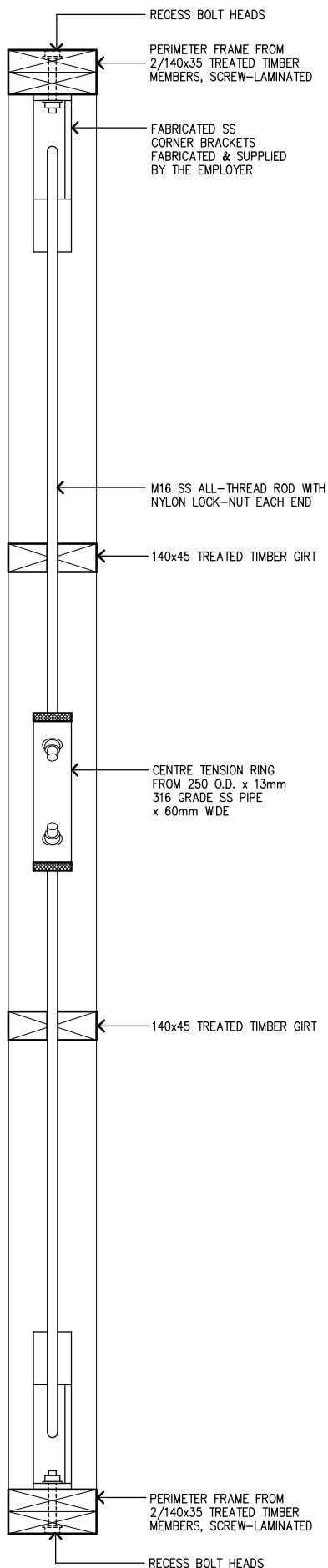
CIVIL & STRUCTURAL ENGINEER
Bruce Delprado
m: +61 428 191 373 e: bruce.delprado@gmail.com

PROJECT:
**OPEN INTEGRATED MARKET
BETIO, SOUTH TARAWA, KIRIBATI**

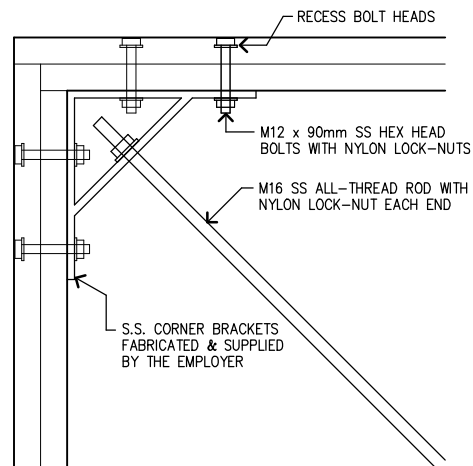
KITSET MODULE NAME:
ROOF SUPPORT 'TREES' T3 AND T4

DRAWING No.
OIM_K12

KITSET MODULE CODES:
T3, T4



SECTION A
1:10



DETAIL B
1:10

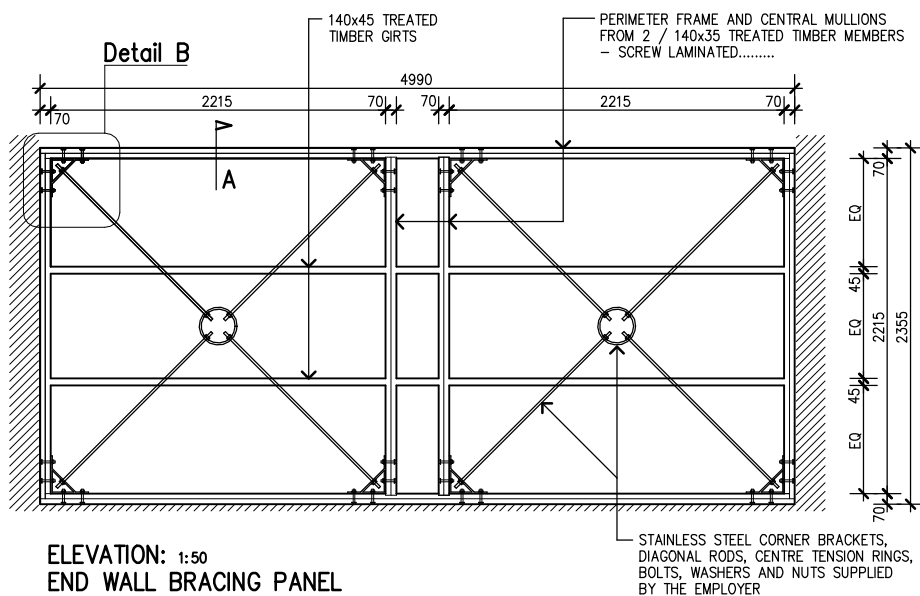
FINISHING SCHEDULE:

By Supplier in Factory (to all exposed surfaces):

- ONE COAT OIL-BASED WOOD PRIMER
- ONE COAT OIL-BASED UNDERCOAT (WHITE)

By Construction Contractor on site (to all exposed surfaces):

- TWO COATS OIL-BASED FINISH COAT (SELECTED COLOUR)



ELEVATION: 1:50
END WALL BRACING PANEL

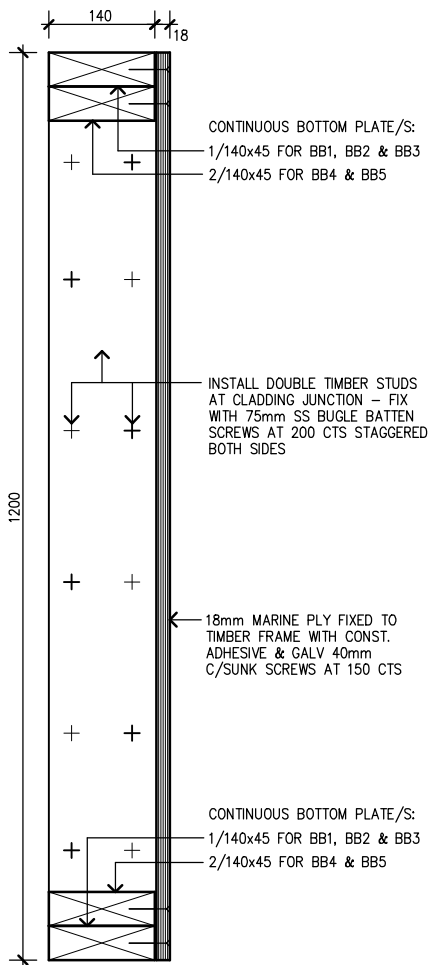
FINISHING SCHEDULE:

By Supplier in Factory (to all exposed surfaces):

- ONE COAT OIL-BASED WOOD PRIMER
- ONE COAT OIL-BASED UNDERCOAT (WHITE)

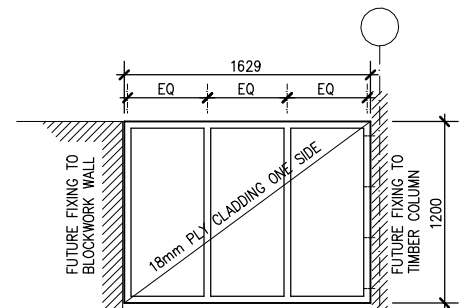
By Construction Contractor on site (to all exposed surfaces):

- TWO COATS OIL-BASED FINISH COAT (SELECTED COLOUR)



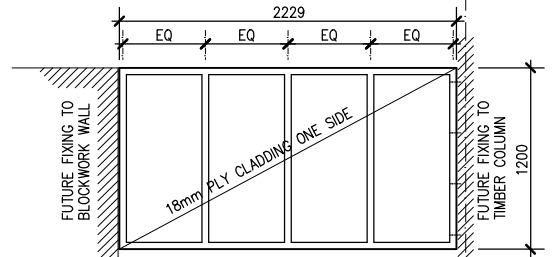
DETAIL A

1:10



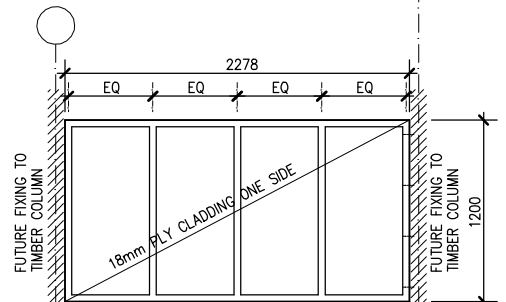
ELEVATION: 1:50

BRACING BEAM BB1



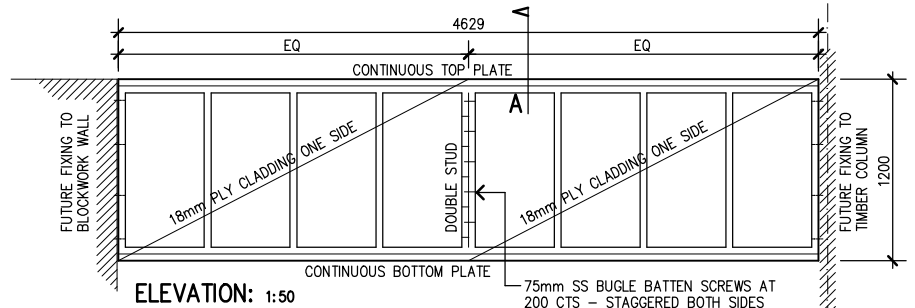
ELEVATION: 1:50

BRACING BEAM BB2

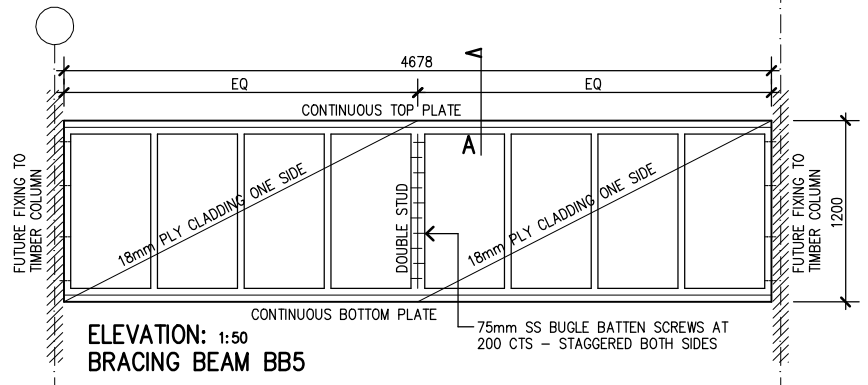


ELEVATION: 1:50

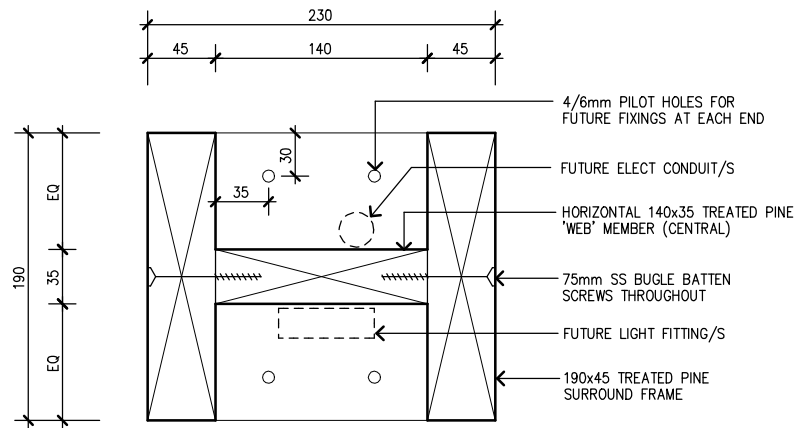
BRACING BEAM BB3



ELEVATION: 1:50
BRACING BEAM BB4

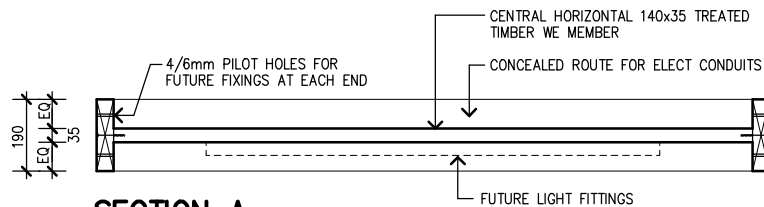


ELEVATION: 1:50
BRACING BEAM BB5



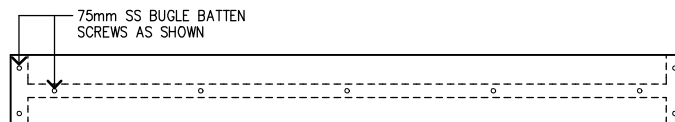
SECTION B

1:5



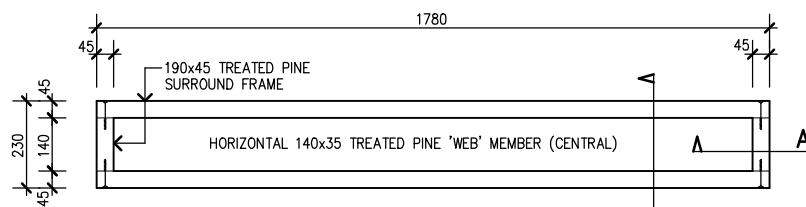
SECTION A

1:20



LONG ELEVATION

1:20



PLAN

1:20

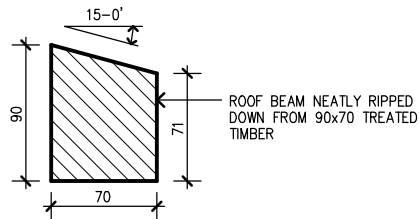
FINISHING SCHEDULE:

By Supplier in Factory (to all exposed surfaces):

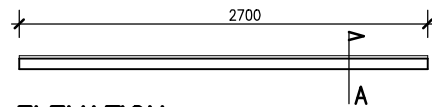
- ONE COAT OIL-BASED WOOD PRIMER
- ONE COAT OIL-BASED UNDERCOAT (WHITE)

By Construction Contractor on site (to all exposed surfaces):

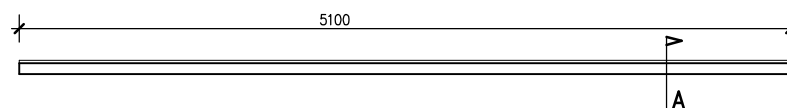
- TWO COATS OIL-BASED FINISH COAT (SELECTED COLOUR)



DETAIL A
1:5



ELEVATION 1:50
ROOF BEAM (RB1) 2.7m long



ELEVATION 1:50
ROOF BEAM (RB2) 5.1m long

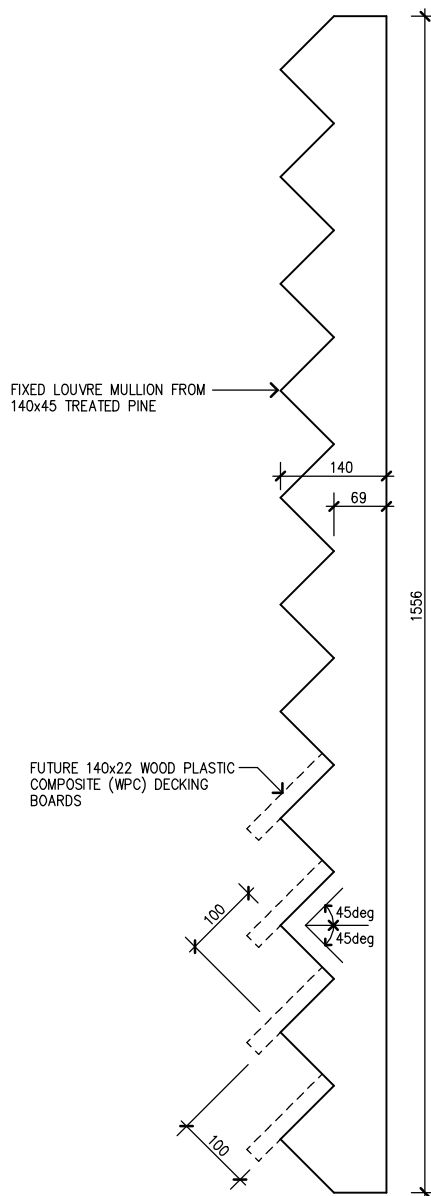
FINISHING SCHEDULE:

By Supplier in Factory (to all exposed surfaces):

- ONE COAT OIL-BASED WOOD PRIMER
- ONE COAT OIL-BASED UNDERCOAT (WHITE)

By Construction Contractor on site (to all exposed surfaces):

- TWO COATS OIL-BASED FINISH COAT (SELECTED COLOUR)



**SIDE ELEVATION:
FIXED LOUVRE MULLION**
1:10

FINISHING SCHEDULE:

By Supplier in Factory (to all exposed surfaces):

- ONE COAT OIL-BASED WOOD PRIMER
- ONE COAT OIL-BASED UNDERCOAT (WHITE)

By Construction Contractor on site (to all exposed surfaces):

- TWO COATS OIL-BASED FINISH COAT (SELECTED COLOUR)



ARCHITECT
alexander & lloyd australia pty ltd
architects and project managers
po box 41111, castlecrag NSW 2068 AUSTRALIA
tel +612 9958 7944 e: architects@algroup.net.au
nominated architects
Graham Turner Reg No. 6639 Kathleen Cheong Reg No. 9977

CIVIL & STRUCTURAL ENGINEER
Bruce Delgado
m: +61 428 181 373 e: bruce.delgado@gmail.com

PROJECT:
**OPEN INTEGRATED MARKET
BETIO, SOUTH TARAWA, KIRIBATI**

KITSET MODULE NAME:
FIXED LOUVRE MULLIONS - FLM

DRAWING No.
OIM_K17

KITSET MODULE CODE:
FLM

